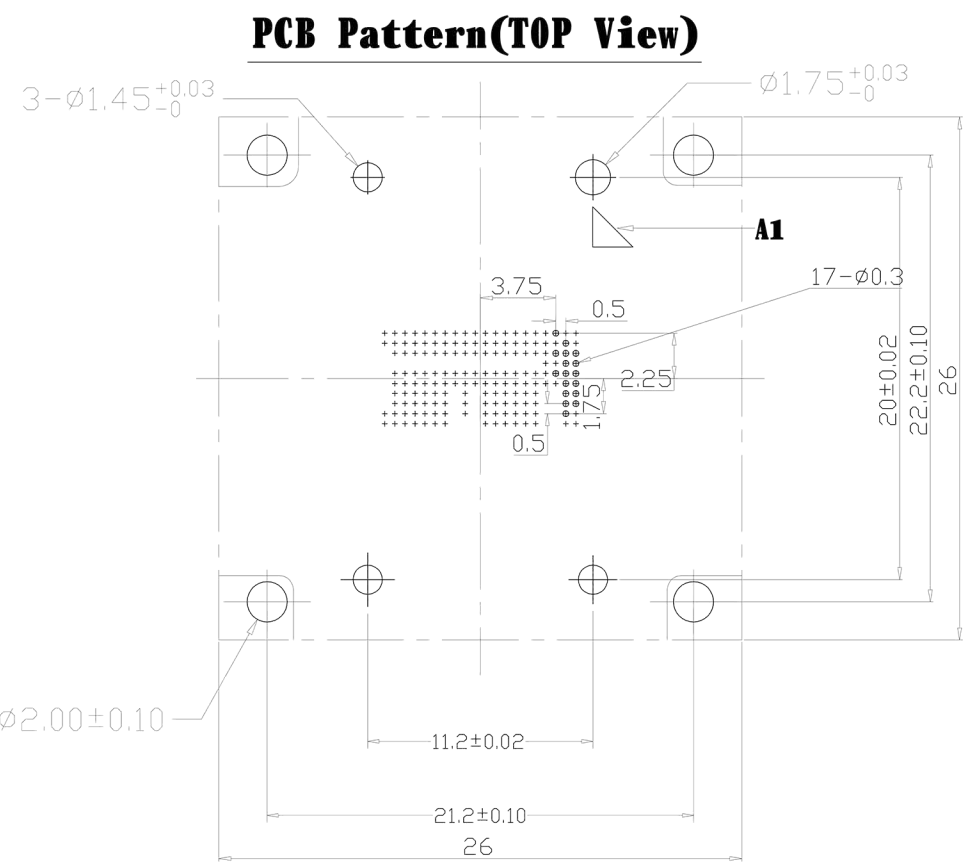
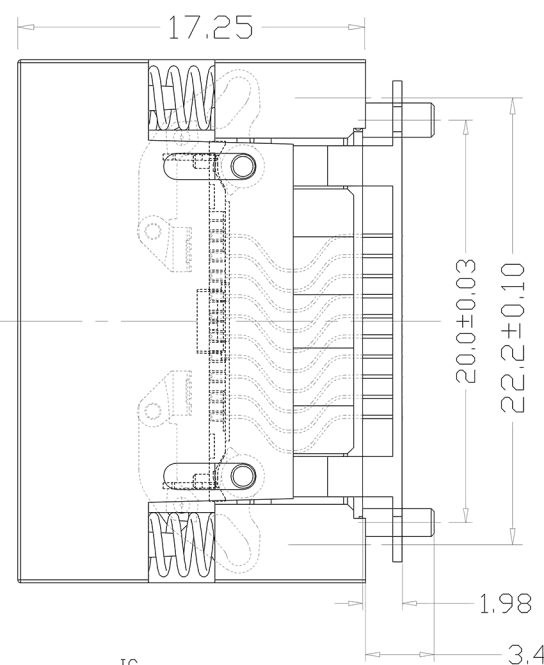
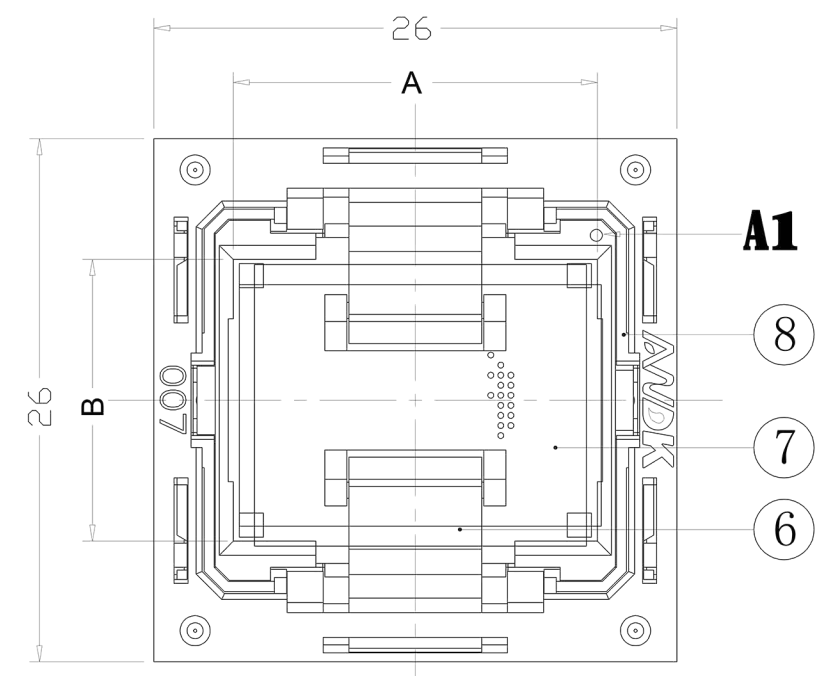
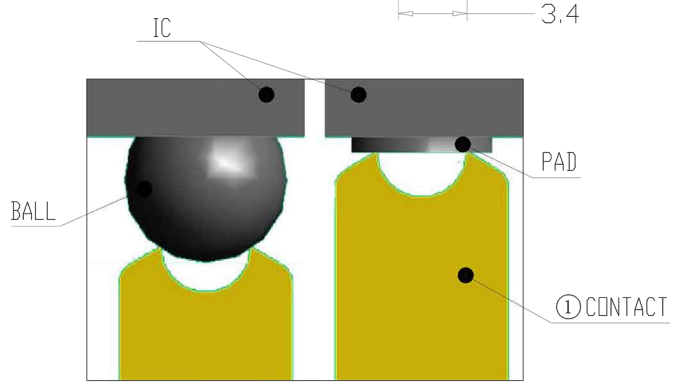
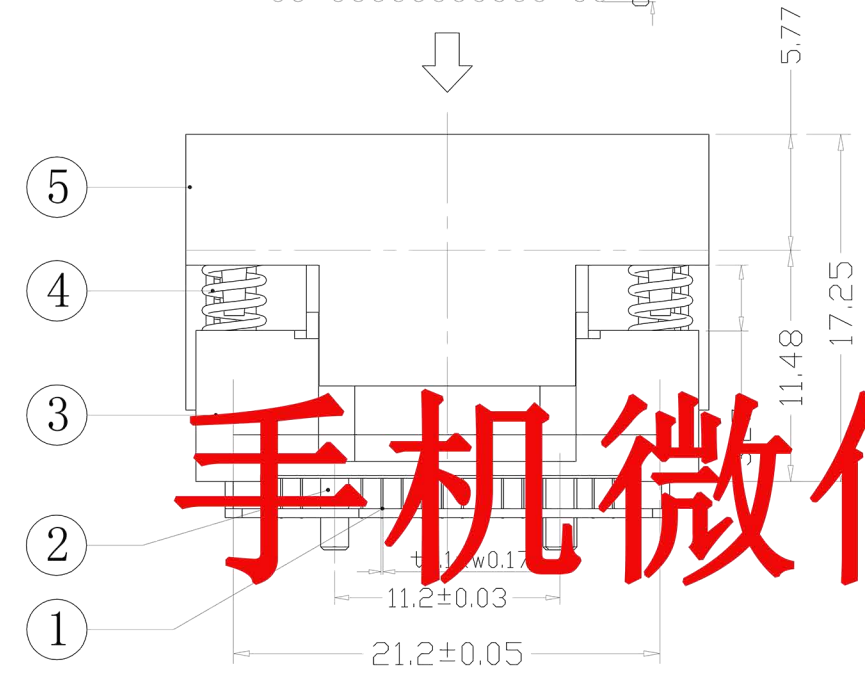
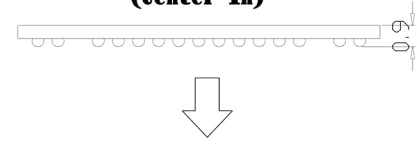


| REVISION | DESCRIPTION | CHECK | APP | DATE | REV. NOTICE. NO |
|----------|-------------|-------|-----|------|-----------------|
| △ 1 | | | | | |
| △ 2 | | | | | |
| △ 3 | | | | | |

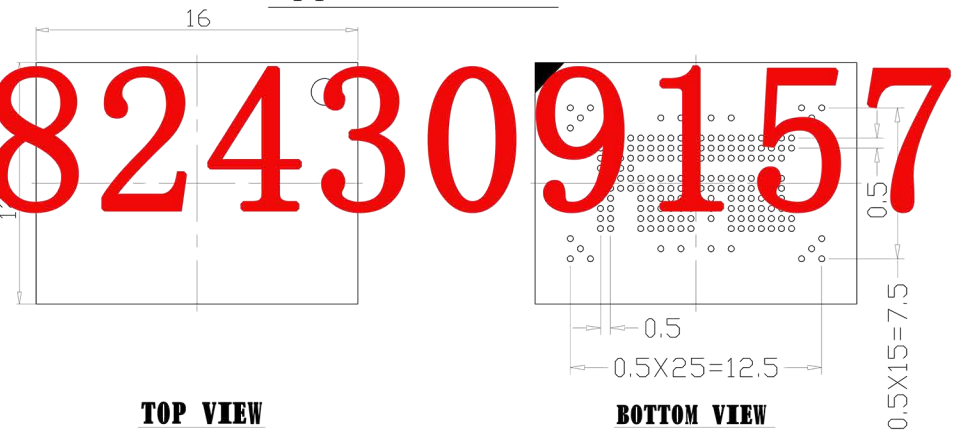


IC Loading Direction
(Center In)



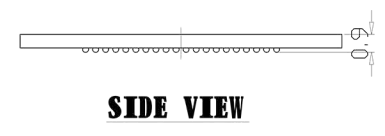
CONTACT TIP DETAIL

Applicable IC



TOP VIEW

BOTTOM VIEW



SIDE VIEW

手机微信同号: 18824309157

PERFORMANCE

1. Insulation Resistance: 1000MΩ Min.At DC 500V
2. Dielectric Withstanding Voltage For 1 Minute At AC 700V
3. Contact Resistance 30mΩ MAX. at 10mA and 20mV MAX.(Initial)
4. Current Rating: 1A max.
5. Operation Temperature -65°C ~+175°C
6. Contact Force 3-5g Per Pin (Normal)
7. Testing chips with balls of different size or superficial oxidation,even if no ball

| No | Part Number | Name | Material | Q/ty | Note |
|----|---------------|-----------|----------|------|------------|
| 8 | 310-048-D105D | IC GUIDE | PEI/PES | 2 | BLACK |
| 7 | 310-048-C105D | SLIDER | PEI/PES | 1 | BLACK |
| 6 | 310-048-C105D | IC HOLDER | PEI/PES | 2 | BLACK |
| 5 | 310-048-B105D | COVER | PEI/PES | 1 | BLACK |
| 4 | 20-B-4505B | SPRING | SUS | 4 | FOR COVER |
| 3 | 310-048-A105D | BASE | PEI/PES | 1 | BLACK |
| 2 | 310-048-F105D | LOCATOR | PEI/PES | 3 | BLACK |
| 1 | 04-A-1705 | CONTACT | BeCu | 186 | Au PLATING |

| PROJECTION | GENERAL TOLERANCES | ±0.10 | TITLE | eMCP SOCKET |
|---------------|--------------------|---------|---------------------------------|-----------------|
| | REV | A | CLASS | 007-22186B-2101 |
| DIMENSION: mm | SCALE: 1:1 | DRW. NO | 007-eMCP-0.5-186(17)-12X16-B-01 | |
| APP: | DATE: | | | |
| CHECK: | DATE: | | | |
| DEGK: ENG04 | DATE: 20121103 | | | |